



India Meteorological Department

(Ministry of Earth Sciences)

NATIONAL BULLETIN NO.: 05 (BOB/04/2024)

TIME OF ISSUE: 0230 HOURS IST

DATED: 09.09.2024

FROM: INDIA METEOROLOGICAL DEPARTMENT (FAX NO. 24643965/24699216/24623220)
TO: CONTROL ROOM, NDM, MINISTRY OF HOME AFFAIRS (FAX.NO. 23093750)
CONTROL ROOM NDMA (FAX.NO. 26701729)
CABINET SECRETARIAT (FAX.NO.23012284, 23018638)
PS TO HON'BLE MINISTER FOR S & T AND EARTH SCIENCES (FAX NO.23316745)
SECRETARY, MOES (FAX NO. 24629777)
H.Q. (INTEGRATED DEFENCE STAFF AND CDS) (FAX NO. 23005137/23005147)
DIRECTOR GENERAL, DOORDARSHAN (23385843)
DIRECTOR GENERAL, AIR (23421105, 23421219)
PIB MOES (FAX NO. 23389042)
UNI (FAX NO. 23355841)
D.G. NATIONAL DISASTER RESPONSE FORCE (NDRF) (FAX NO. 26105912, 2436 3260)
DIRECTOR, PUNCTUALITY, INDIAN RAILWAYS (FAX NO. 23388503)
CHIEF SECRETARY, WEST BENGAL (FAX NO. 033-22144328)
CHIEF SECRETARY, ODISHA (FAX NO. 0674-2536660)
CHIEF SECRETARY, ANDHRA PRADESH (FAX NO. 0863-2441029, 08645-246600)
CHIEF SECRETARY, JHARKHAND (FAX NO. 0651-2400255)
CHIEF SECRETARY, CHHATTISGARH (FAX NO. 0771-2221206)
CHIEF SECRETARY, TELANGANA (FAX NO. 040-23453700)
ADMINISTRATOR, ANDAMAN & NICOBAR ISLANDS (FAX NO. 03192- 232656)

Sub: Deep Depression over northwest and adjoining westcentral Bay of Bengal

The depression over northwest and adjoining westcentral Bay of Bengal moved slowly north-northwestwards with a speed of 7 kmph during past 6 hours, intensified into a **Deep Depression** and lay centered at 2330 hours IST of yesterday, the 8th September, 2024 over the same region near latitude 18.9°N and longitude 86.3°E, about 110 km south-southeast of Puri (Odisha), 150 km east-southeast of Gopalpur (Odisha), 160 km south-southwest of Paradip (Odisha), 210 km south-southwest of Chandbali (Odisha), 240 km east-northeast of Kalingapatnam (Andhra Pradesh) and 330 km south-southwest of Digha (West Bengal).

It is very likely to move nearly northwestwards and cross Odisha coast near Puri by noon of 9th September. Thereafter, it is very likely to move west-northwestwards across Odisha & Chhattisgarh during subsequent 2 days.

The system is under the continuous surveillance of Doppler Weather Radars at Vishakhapatnam and Gopalpur

Warnings:

(i) Rainfall warning

Coastal Andhra Pradesh & Yanam: Light to moderate rainfall at most places is very likely with heavy to very heavy rainfall at a few places and extremely heavy rainfall at isolated places on 9th and heavy rainfall on 10th September.

Spatial rainfall distribution: Isolated: <25%, A few: 26-50%, Many: 51-75%, Most: 76-100%

Rainfall amount (mm): Heavy rain: 64.5 – 115.5, Very heavy rain: 115.6 – 204.4, Extremely heavy rain: 204.5 or more.

Odisha: Light to moderate rainfall at most places is very likely with heavy to very heavy rainfall at a few places with extremely heavy rainfall at isolated places over south Odisha and isolated heavy to very heavy rainfall over north Odisha on 9th; heavy to very heavy rainfall at isolated places over Odisha on 10th and isolated heavy rainfall over interior Odisha on 11th September.

Chhattisgarh: Light to moderate rainfall at most places is likely with heavy to very heavy rainfall at isolated places over north Chhattisgarh on 9th & 10th and heavy rainfall over north Chhattisgarh on 11th September.

Telangana: Light to moderate rainfall at many places is likely with heavy to very heavy rainfall at isolated places very likely on 9th; heavy rainfall on 10th September.

Gangetic West Bengal: Light to moderate rainfall at most places with heavy to very heavy rainfall at isolated places very likely during 9th & 10th and heavy rainfall at isolated places 12th September.

Jharkhand: Light to moderate rainfall at most places is very likely with heavy rainfall at isolated places on 9th; heavy to very heavy rainfall over south Jharkhand during 10th-11th and heavy rainfall on 12th September.

Vidarbha: Light to moderate rainfall at most places is very likely with heavy rainfall at isolated places on 10th and heavy to very heavy rainfall at isolated places on 9th September.

(ii) Wind warning

Squally weather with wind speed reaching 55-65 kmph gusting to 75 kmph prevailing over Northwest and adjoining Northeast & Central Bay of Bengal and along & off Andhra Pradesh-Odisha-West Bengal coasts, likely to continue till noon of 9th September. It is likely to decrease, gradually becoming 45-55 kmph gusting to 65 kmph by evening of 9th September. It will decrease gradually thereafter.

Squally weather with wind speed reaching 40-50 kmph gusting to 60 kmph is likely to prevail over coastal districts of Odisha and adjoining Gangetic West Bengal till early morning of 9th September, becoming 55-65 kmph gusting to 75 kmph by noon of 9th and decrease gradually thereafter becoming 45-55 kmph gusting to 65 Kmph by evening of 9th.

Squally weather with wind speed reaching 40-50 kmph gusting to 60 kmph is likely over interior districts of north Odisha and adjoining districts of Jharkhand and north Chhattisgarh on 09th September and decrease gradually thereafter.

(iii) Sea Condition: Rough to very rough sea condition over Northwest and adjoining Northeast & Central Bay of Bengal and along & off Andhra Pradesh-Odisha-West Bengal coasts till evening of 9th and rough sea condition on 10th September. It is likely to improve gradually thereafter

(iv) Fishermen Warning

Fishermen are advised not to venture into Northwest and adjoining Northeast & Central Bay of Bengal; along & off Andhra Pradesh-Odisha-West Bengal coasts till morning of 11th September.

(v) Flash Flood Guidance: (Graphics Attached)

Moderate flash flood risk likely over few watersheds & neighbourhoods of following Met Sub-divisions during next 24 hours.

Coastal Andhra Pradesh - East Godavari and Vishakhapatnam districts.

Chhattisgarh - Bastar, Bijapur, Dantewara, Dhamtari, Gariaband, Janjgir_Champa, Kanker, Mahasamund, Narayanpur and Sukma districts.

Odisha - Anugul, Balangir, Baleswar, Baragarh, Bauda, Bhadrak, Cuttack, Deogarh, Dhenkanal, Gajapathi, Jharsuguda, Kalahandi, Kandhamal, Khordha, Koraput, Mayurbhanj, Nayagarh, Nuaparha, Puri, Rayagarha, Sambalpur and Subarnapur districts.

Surface runoff/ Inundation may occur at some fully saturated soils & low-lying areas over AoC as shown in map due to expected rainfall occurrence in next 24 hours.

(vi) Impact Expected (coastal Andhra Pradesh, Odisha, Chhattisgarh, Telangana, Jharkhand and West Bengal due to heavy Rainfall and squally wind)

- ✓ Localized Flooding of roads, water logging in low lying areas and closure of underpasses mainly in urban areas of the above region.
- ✓ Occasional reduction in visibility due to heavy rainfall.

Spatial rainfall distribution: Isolated: <25%, A few: 26-50%, Many: 51-75%, Most: 76-100%

Rainfall amount (mm): Heavy rain: 64.5 – 115.5, Very heavy rain: 115.6 – 204.4, Extremely heavy rain: 204.5 or more.

- ✓ Reduction of visibility over sea area due to sea spray induced by strong wind and heavy rainfall.
- ✓ Disruption of traffic in major cities due to water logging in roads leading to increased travel time.
- ✓ Minor damage to kutcha roads.
- ✓ Possibilities of damage to vulnerable structure.
- ✓ Localized Landslides/Mudslides/landslips/mud slips/land sinks/mud sinks.
- ✓ Damage to horticulture and standing crops in some areas due to inundation.
- ✓ It may lead to riverine flooding in some river catchments (for riverine flooding please visit Web page of CWC)
- ✓ Uprooting of small trees and breaking of tree branches e.g. Banana, Papaya, Moringa, Orchards and etc. along coastal districts of North Odisha & adjoining West Bengal.

(vii) Action Suggested (coastal Andhra Pradesh, Odisha, Chhattisgarh, Telangana, Jharkhand and West Bengal due to heavy Rainfall)

- ✓ Fishermen are advised not to venture into Northwest and adjoining Northeast & Central Bay of Bengal; along & off Andhra Pradesh-Odisha-West Bengal coasts till morning of 11th September.
- ✓ Judicious regulation of offshore/onshore Operations
- ✓ Judicious regulation of surface transports including railways and roadways.
- ✓ Check for traffic congestion on your route before leaving for your destination.
- ✓ Follow any traffic advisories that are issued in this regard.
- ✓ Avoid going to areas that face the water logging problems often.
- ✓ Avoid staying in vulnerable structure.

Agromet advisories for Heavy Rainfall likely over various parts of the country

- ✓ Drain out excess water from rice, soybean, red gram, maize, cotton and turmeric in **Telangana**; from rice, finger millet, maize and groundnut in **Odisha** to prevent water logging.
- ✓ Postpone transplanting of rice in North Coastal **Andhra Pradesh**.
- ✓ Provide mechanical support to horticultural crops & staking to vegetables.
- ✓ Keep the harvested produce at safer place.

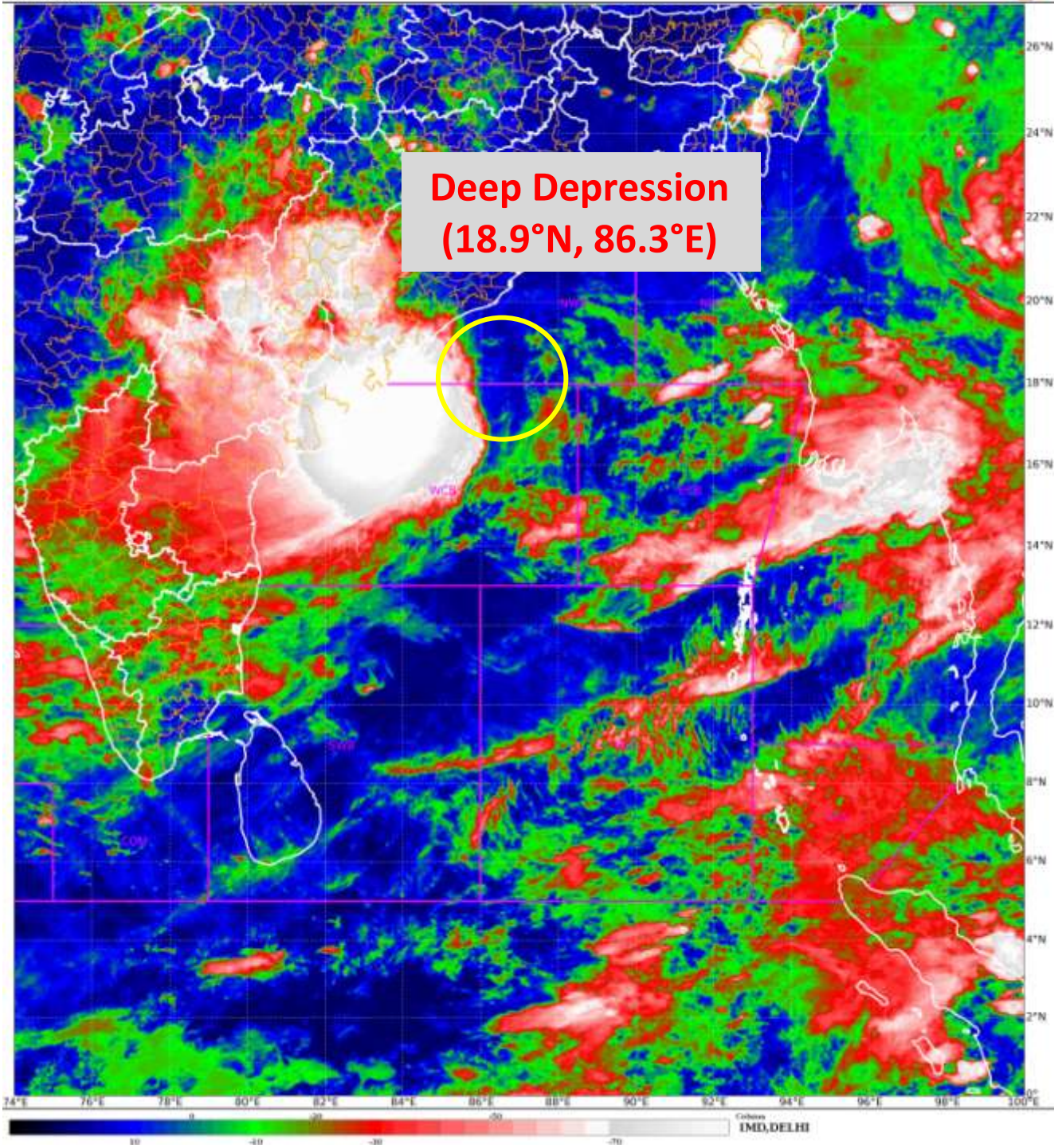
Significant rainfall recorded from 0830 hrs IST to 1730 hrs IST of yesterday, the 8th September, 2024 (in cm) is given in ANNEXURE-I.

The next bulletin will be issued at 0830hrs IST of today, the 9th September, 2024.

**(Shibin Balakrishnan)
Scientist- D, RSMC, New Delhi**

*Copy to: CRS, Pune/ACWC Kolkata/ACWC Chennai/CWC Bhubaneswar/CWC
Visakhapatnam/MO Port Blair/MC Raipur/MC Ranchi/MC Hyderabad/MC Amaravati*

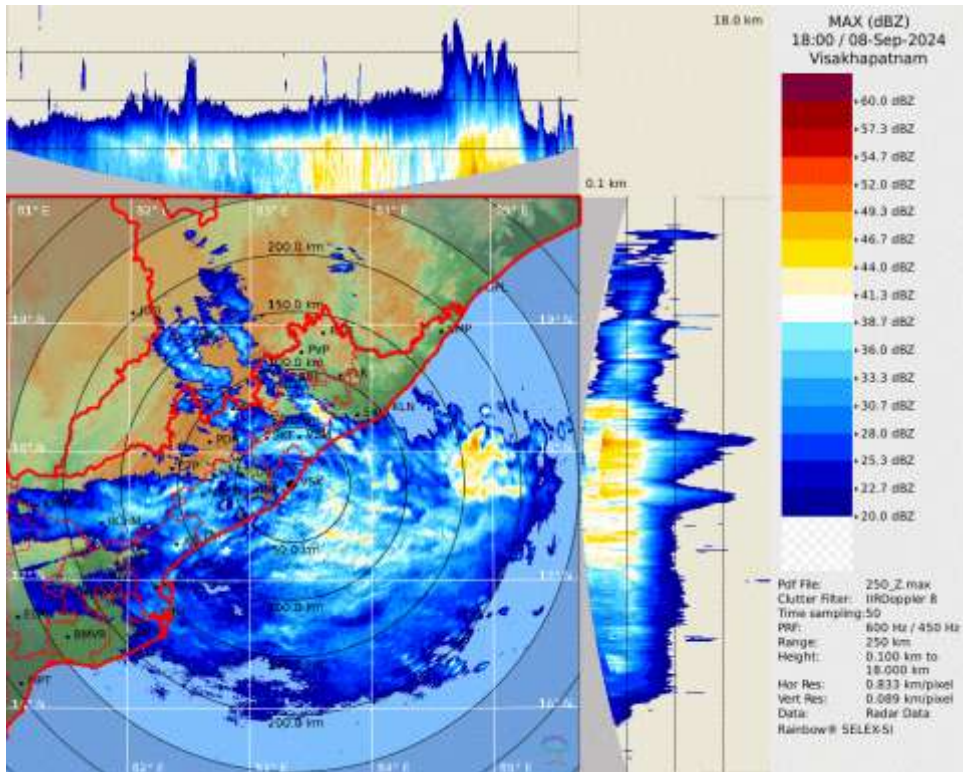
Spatial rainfall distribution: Isolated: <25%, A few: 26-50%, Many: 51-75%, Most: 76-100%
Rainfall amount (mm): Heavy rain: 64.5 – 115.5, Very heavy rain: 115.6 – 204.4, Extremely heavy rain: 204.5 or more.



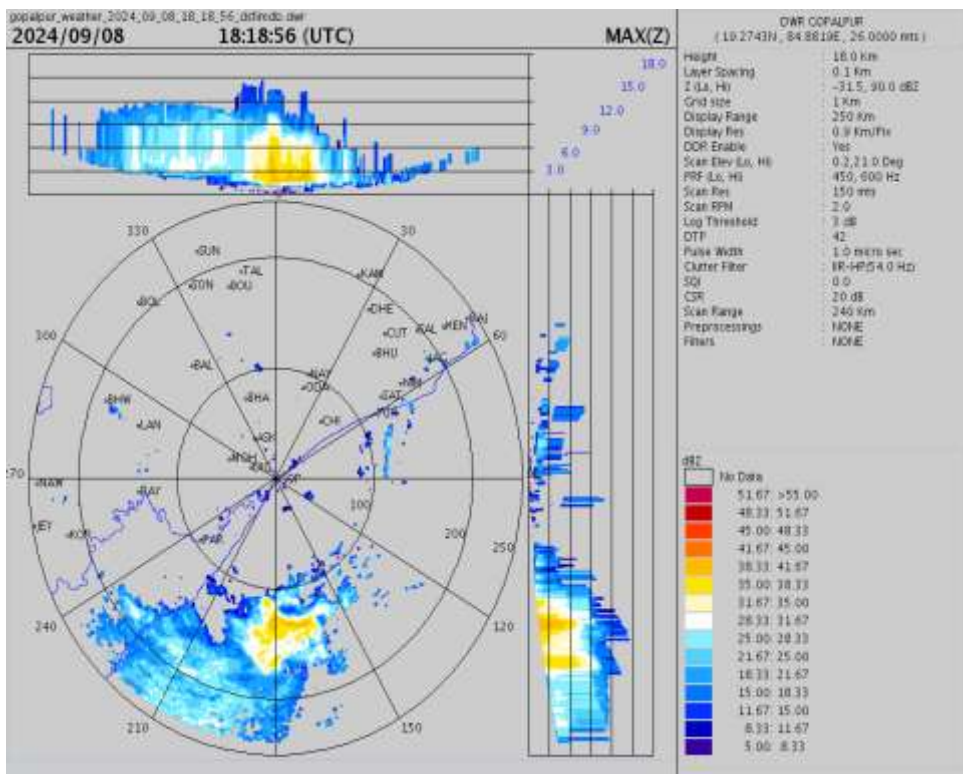
**Deep Depression
(18.9°N, 86.3°E)**

Spatial rainfall distribution: Isolated: <25%, A few: 26-50%, Many: 51-75%, Most: 76-100%
Rainfall amount (mm): Heavy rain: 64.5 – 115.5, Very heavy rain: 115.6 – 204.4, Extremely heavy rain: 204.5 or more.

Reflectivity imagery from **Doppler Weather Radar, Visakhapatnam**



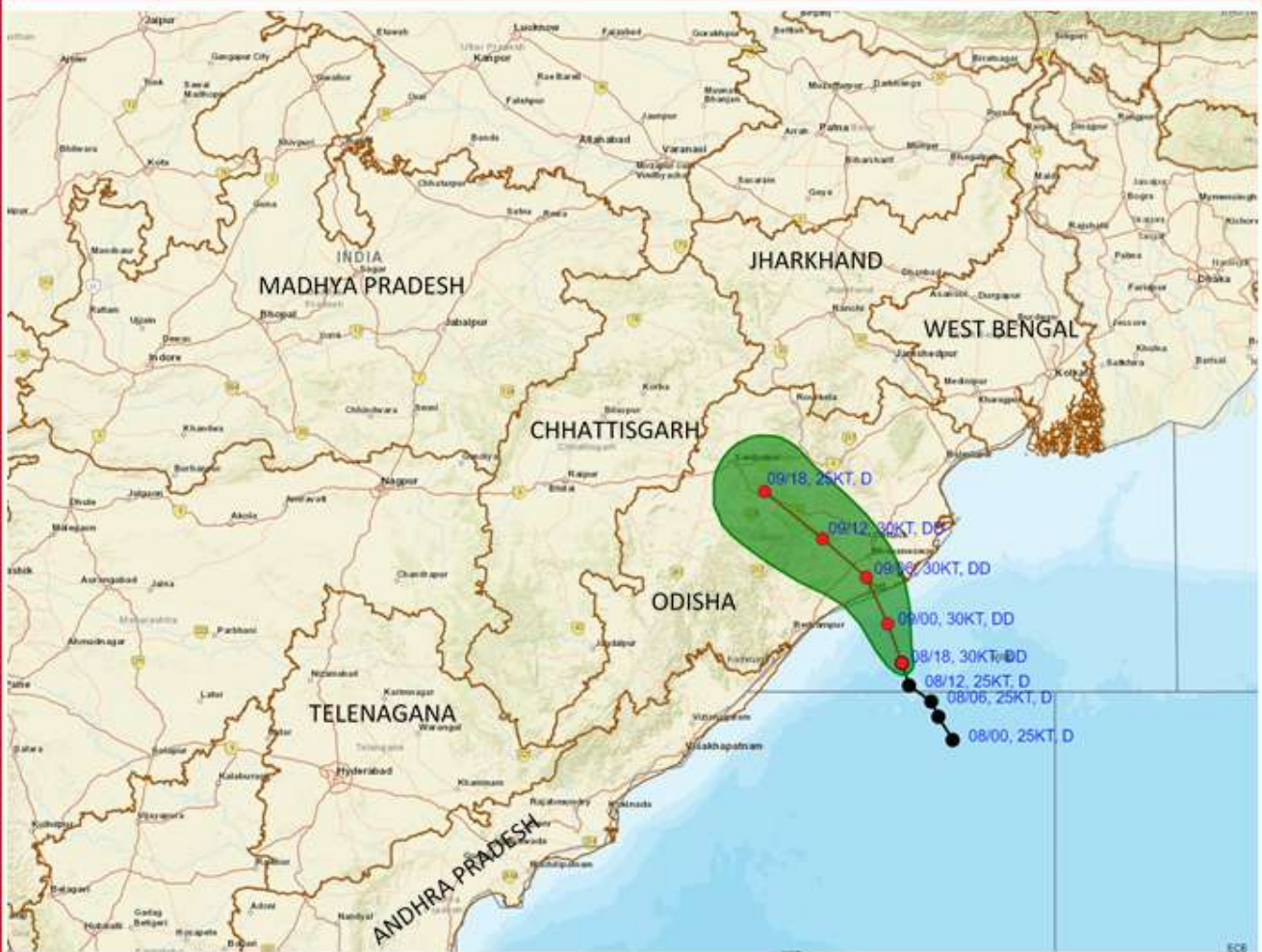
Maximum reflectivity imagery from Doppler Weather Radar, Gopalpur



Spatial rainfall distribution: Isolated: <25%, A few: 26-50%, Many: 51-75%, Most: 76-100%
Rainfall amount (mm): Heavy rain: 64.5 – 115.5, Very heavy rain: 115.6 – 204.4, Extremely heavy rain: 204.5 or more.



OBSERVED AND FORECAST TRACK OF DEEP DEPRESSION OVER NORTHWEST AND ADJOINING WESTCENTRAL BAY OF BENGAL BASED ON 1800 UTC (2330 IST) OF 8th SEPTEMBER, 2024.



DATE/TIME IN UTC
 IST=UTC + 0530
 L: LOW PRESSURE AREA
 WML: WELL MARKED LOW PRESSURE AREA
 D: DEPRESSION (17-27 KT)
 DD: DEEP DEPRESSION (28-33 KT)
 CS: CYCLONIC STORM (34-47 KT)
 SCS: SEVERE CYCLONIC STORM (48-63KT)
 VSCS: VERY SEVERE CYCLONIC STORM (64-89 KT)
 ESCS: EXTREMELY SEVERE CYCLONIC STORM (90-119 KT)
 SuCS: SUPER CYCLONIC STORM (≥ 120 KT)

- LESS THAN 34 KT
- 34-47 KT
- ≥ 48 KT
- OBSERVED TRACK
- FORECAST TRACK
- CONE OF UNCERTAINTY

Spatial rainfall distribution: Isolated: <25%, A few: 26-50%, Many: 51-75%, Most: 76-100%
 Rainfall amount (mm): Heavy rain: 64.5 – 115.5, Very heavy rain: 115.6 – 204.4, Extremely heavy rain: 204.5 or more.



OBSERVED AND FORECAST TRACK ALONGWITH QUADRANT WIND DISTRIBUTION OF DEEP DEPRESSION OVER NORTHWEST AND ADJOINING WESTCENTRAL BAY OF BENGAL BASED ON 1800 UTC (2330 IST) OF 8th SEPTEMBER, 2024.



DATE/TIME IN UTC

IST=UTC + 0530

L: LOW PRESSURE AREA

WML: WELL MARKED LOW PRESSURE AREA

D: DEPRESSION (17-27 KT)

DD: DEEP DEPRESSION (28-33 KT)

CS: CYCLONIC STORM (34-47 KT)

SCS: SEVERE CYCLONIC STORM (48-63KT)

VSCS: VERY SEVERE CYCLONIC STORM (64-89 KT)

ESCS: EXTREMELY SEVERE CYCLONIC STORM (90-119 KT)

SuCS: SUPER CYCLONIC STORM (≥ 120 KT)

● LESS THAN 34 KT

○ 34-47 KT

● ≥ 48 KT

— OBSERVED TRACK

— FORECAST TRACK

▲ CONE OF UNCERTAINTY

AREA OF MAXIMUM SUSTAINED WIND SPEED:

■ 28-33 KT (52-61 KMPH)

■ 34-49 KT (62-91 KMPH)

■ 50-63 KT (92-117 KMPH)

■ ≥ 64 KT (≥118 KMPH)

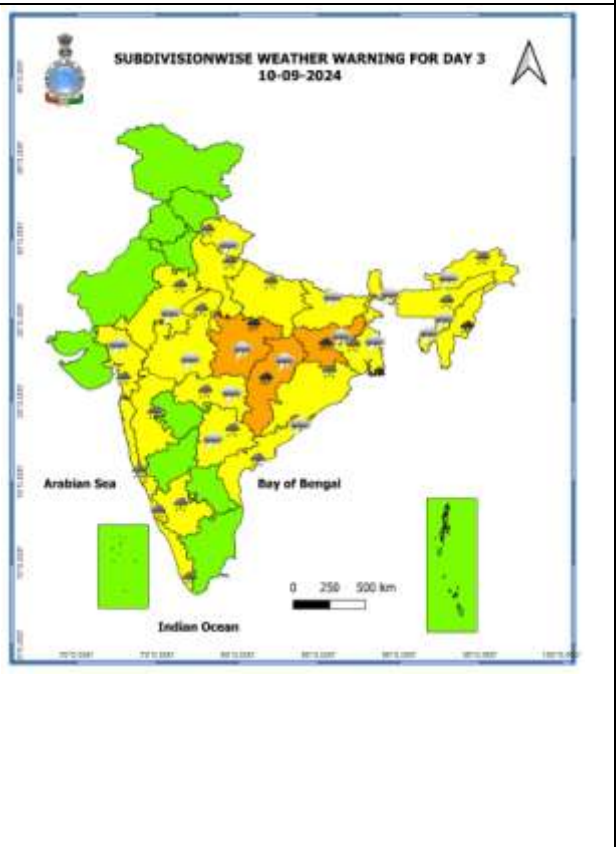
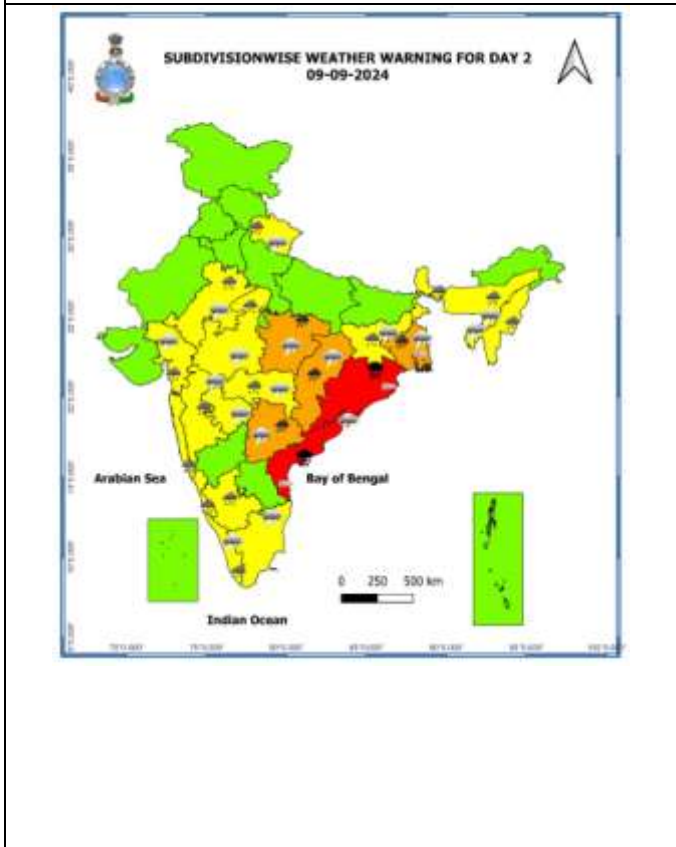
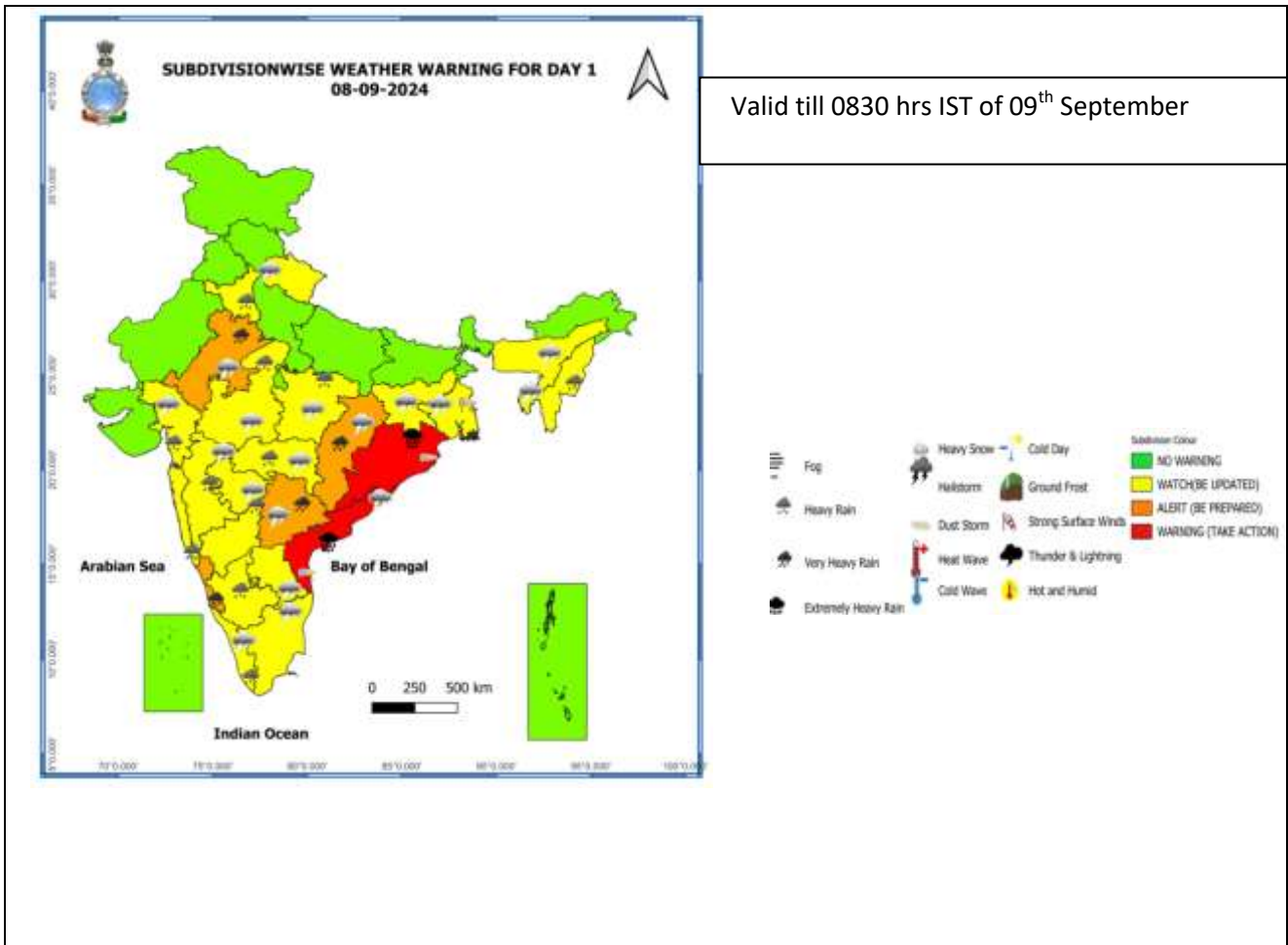
IMPACT OVER THE SEA

MSW (knot/kmph)	Impact	Action
28-33 (52-61)	Very rough seas	Total suspension of fishing operations
34-49 (62-91)	High to very high seas	Total suspension of fishing operations
50-63 (92-117)	Very high seas	Total suspension of fishing operations
≥ 64 (≥118)	Phenomenal	Total suspension of fishing operations

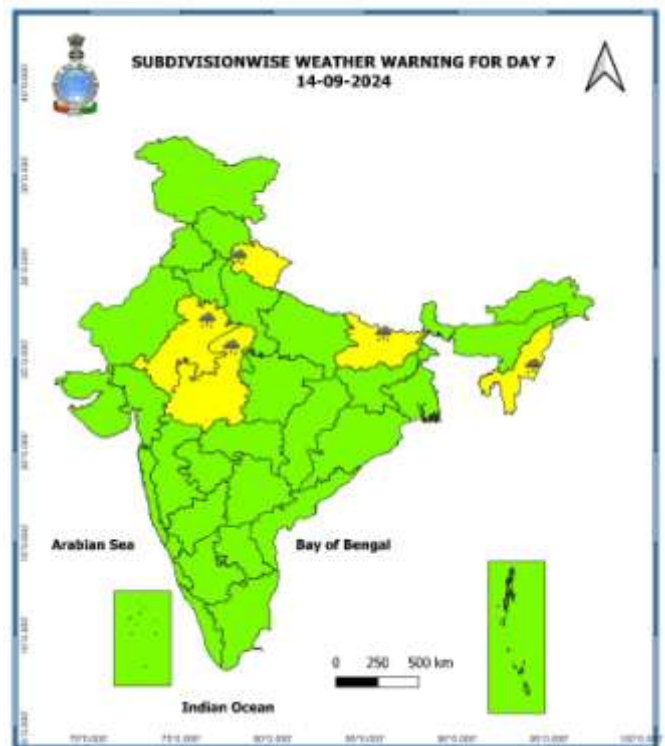
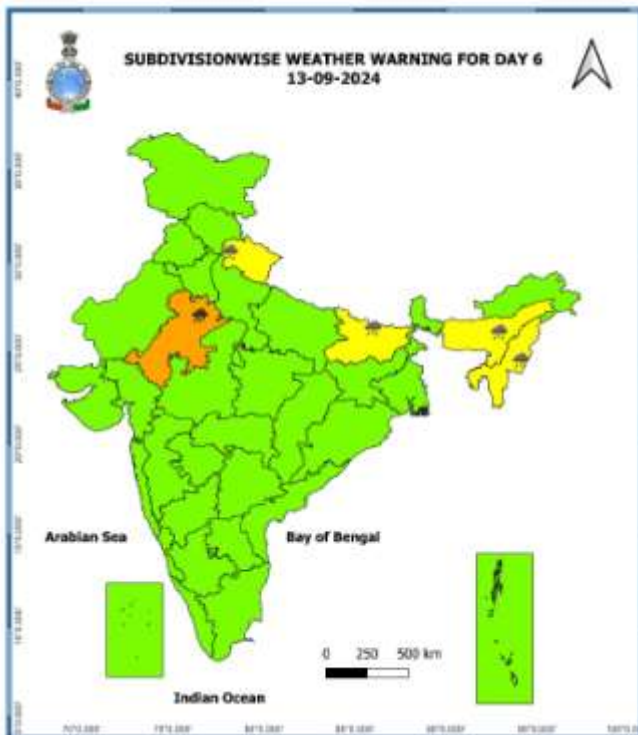
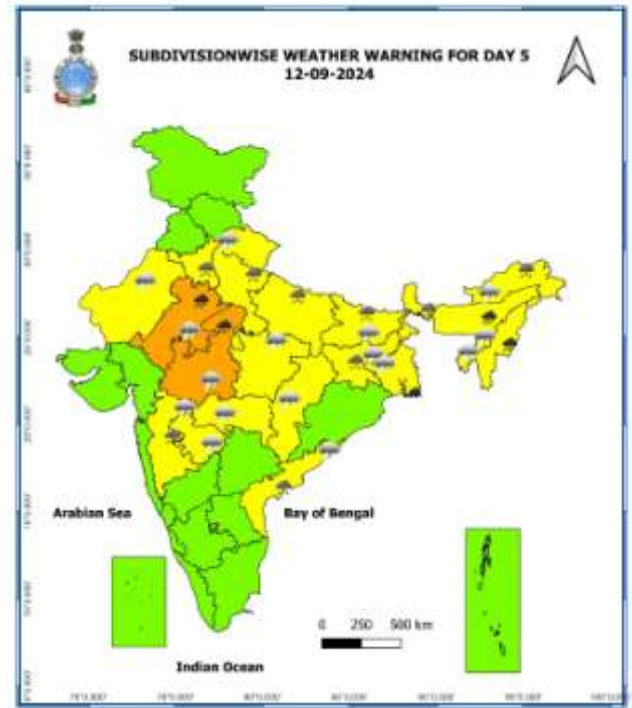
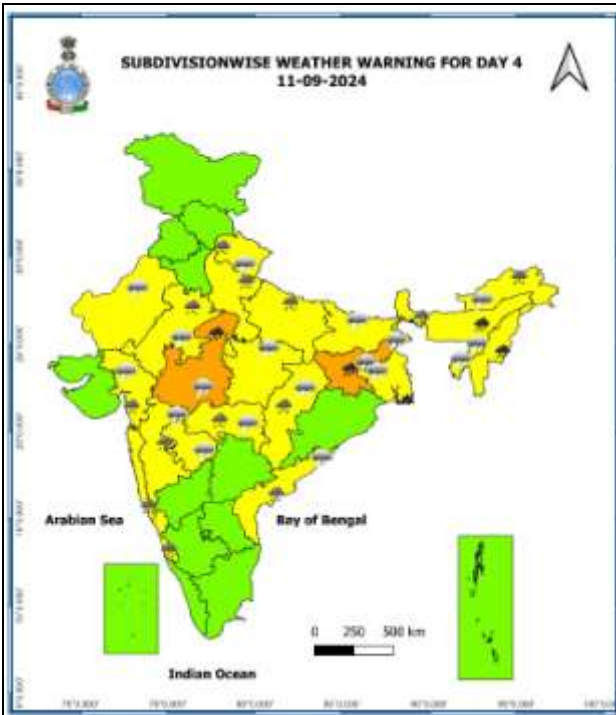
Spatial rainfall distribution: Isolated: <25%, A few: 26-50%, Many: 51-75%, Most: 76-100%

Rainfall amount (mm): Heavy rain: 64.5 – 115.5, Very heavy rain: 115.6 – 204.4, Extremely heavy rain: 204.5 or more.

Warning Graphics



Spatial rainfall distribution: Isolated: <25%, A few: 26-50%, Many: 51-75%, Most: 76-100%
 Rainfall amount (mm): Heavy rain: 64.5 – 115.5, Very heavy rain: 115.6 – 204.4, Extremely heavy rain: 204.5 or more.



- Action may be taken based on **ORANGE AND RED** COLOUR warnings.
- Vulnerable regions likely urban and hilly areas action may be initiated for heavy rainfall warning.
- As the lead period increases forecast accuracy decreases.

Spatial rainfall distribution: Isolated: <25%, A few: 26-50%, Many: 51-75%, Most: 76-100%
 Rainfall amount (mm): Heavy rain: 64.5 – 115.5, Very heavy rain: 115.6 – 204.4, Extremely heavy rain: 204.5 or more.

24 hours Outlook for the Flash Flood Risk (FFR) till 1730 IST of 09-09-2024 :

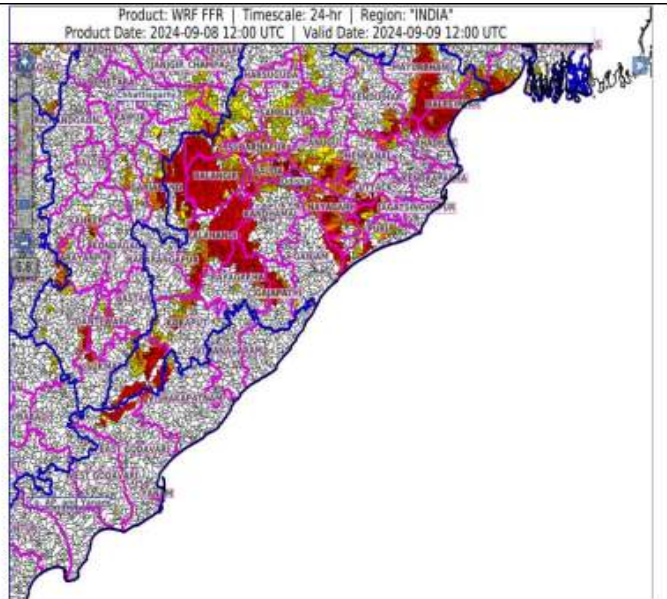
Moderate flash flood risk likely over few watersheds & neighbourhoods of following Met Sub-divisions during next 24 hours.

Coastal AP - East Godavari and Vishakhapatnam districts.

Chhattisgarh - Bastar, Bijapur, Dantewara, Dhamtari, Gariaband, Janjgir_Champa, Kanker, Mahasamund, Narayanpur and Sukma districts.

Odisha - Anugul, Balangir, Baleshwar, Baragarh, Bauda, Bhadrak, Cuttack, Deogarh, Dhenkanal, Gajapathi, Jharsuguda, Kalahandi, Kandhamal, Khordha, Koraput, Mayurbhanj, Nayagarh, Nuaparha, Puri, Rayagarha, Sambalpur and Subarnapur districts.

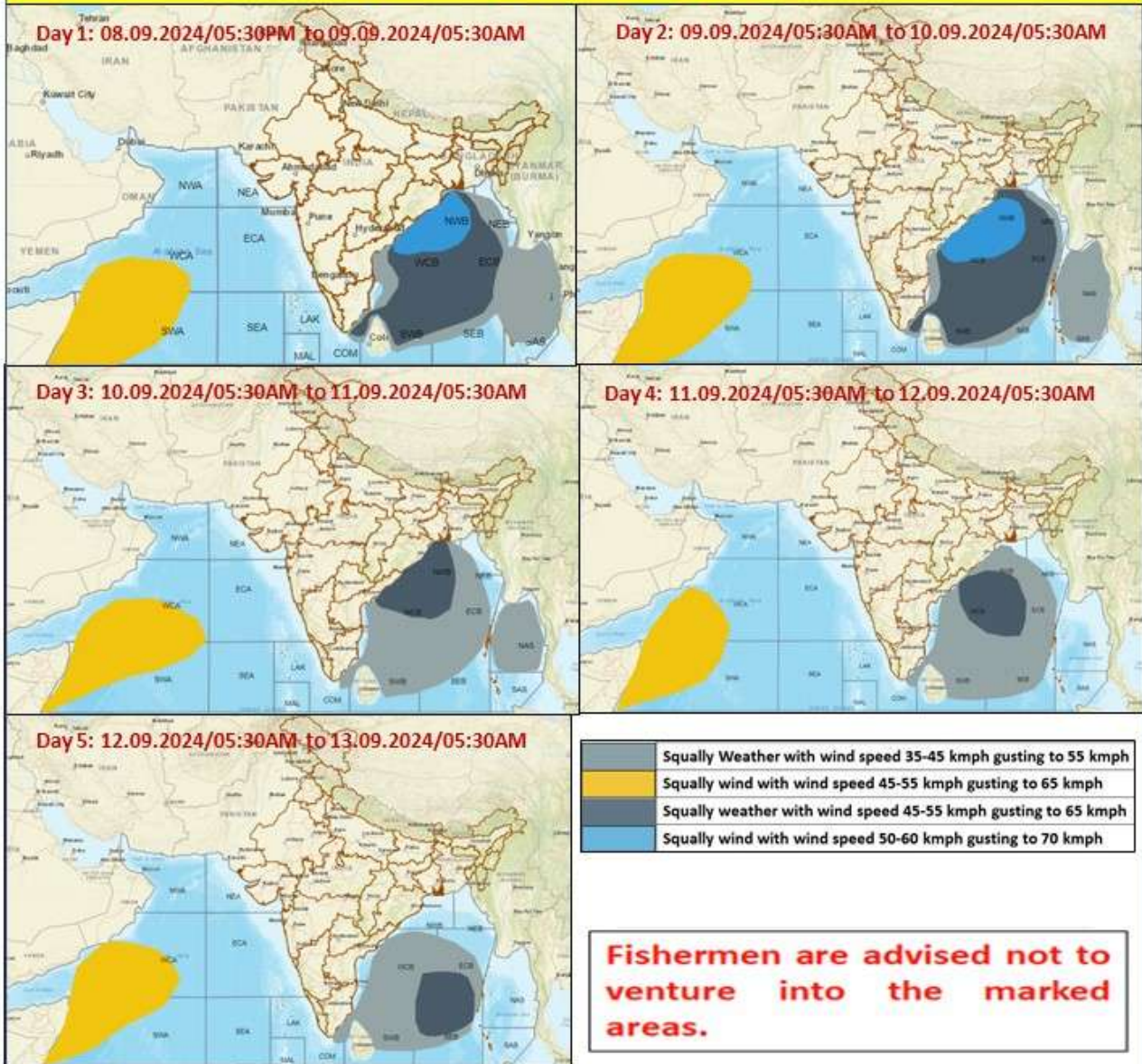
Surface runoff/ Inundation may occur at some fully saturated soils & low-lying areas over AoC as shown in map due to expected rainfall occurrence in next 24 hours.



Spatial rainfall distribution: Isolated: <25%, A few: 26-50%, Many: 51-75%, Most: 76-100%

Rainfall amount (mm): Heavy rain: 64.5 – 115.5, Very heavy rain: 115.6 – 204.4, Extremely heavy rain: 204.5 or more.

Fishermen Warning Graphics



Spatial rainfall distribution: Isolated: <25%, A few: 26-50%, Many: 51-75%, Most: 76-100%
 Rainfall amount (mm): Heavy rain: 64.5 – 115.5, Very heavy rain: 115.6 – 204.4, Extremely heavy rain: 204.5 or more.

Significant rainfall recorded from 0830 hrs IST to 1730 hrs IST of yesterday, the 8th September, 2024 (cm):

Coastal Andhra Pradesh & Yanam: Anandapuram (dis.-Visakhapatnam) 10, Mehadrigadda (dis.-Visakhapatnam) 7, Visakhapatnam, Bhimunipattinam & Kailashgiri (dis.-Visakhapatnam) 6 each, Vizianagaram (dis.-Vizianagaram) 5 each;

Chhattisgarh: Keshkal (dis.-Kondagaon) 4, Mana & Mainpat dis.-Surguja) 3 each, Jagdalpur 2;

Odisha: Gopalpur 4;

Telangana: Yellandu (dis.-Bhadradi_Kothagudem) 3, Rajendarnagar (dis.-Ranga_Reddy) 2;

Spatial rainfall distribution: Isolated: <25%, A few: 26-50%, Many: 51-75%, Most: 76-100%

Rainfall amount (mm): Heavy rain: 64.5 – 115.5, Very heavy rain: 115.6 – 204.4, Extremely heavy rain: 204.5 or more.